



Dominion[®]

Storm Restoration



Storm Restoration

Patrolling the Lines

First, patrollers must assess damage and determine what resources and materials will be needed for repairs.



Storm Restoration Night Packaging

During the night, damage is analyzed and work assignments are made for the next morning.



Storm Restoration Tree Removal

Before the line crews can begin work, tree trimmers must clear the trees from the lines.



Storm Restoration Site Assessment

The job site must be surveyed to look for hazards and to determine the best access for equipment.



Storm Restoration

Protective Grounding

To make the lines safe, grounds must be installed on both sides of the work area for protection in case the lines are accidentally energized.



Storm Restoration

Pre-Job Briefing

The crew must plan their work and discuss each person's responsibilities to ensure the work is done safely.



Storm Restoration Traffic Control

Before equipment is moved into place, signs and cones must be placed around the work zone to alert motorists.



Storm Restoration

Setting a New Pole



When the damage includes a broken pole, special equipment is brought to the site to dig the hole for a new pole and to lift and set it into place.

Storm Restoration

Removing Damaged Material

The broken pole must be cut so the wires can be untangled and lifted to the top of the new pole.



Storm Restoration

New Hardware and Support

A new crossarm must be installed at the top of the new pole with insulators to support the wires.



Storm Restoration

Moving the Wires into Place

The wires must be separated and installed on the new pole.



Storm Restoration

Splicing the Broken Wire

Broken wires must be spliced together using special tools and materials.



Storm Restoration

Finishing the Job

The job isn't finished yet...the crew must:

- Remove the protective grounds
- Patrol the remainder of the line
- Re-energize the line
- Perform voltage checks at a nearby transformer
- Clean up the worksite

....Then on to the NEXT job

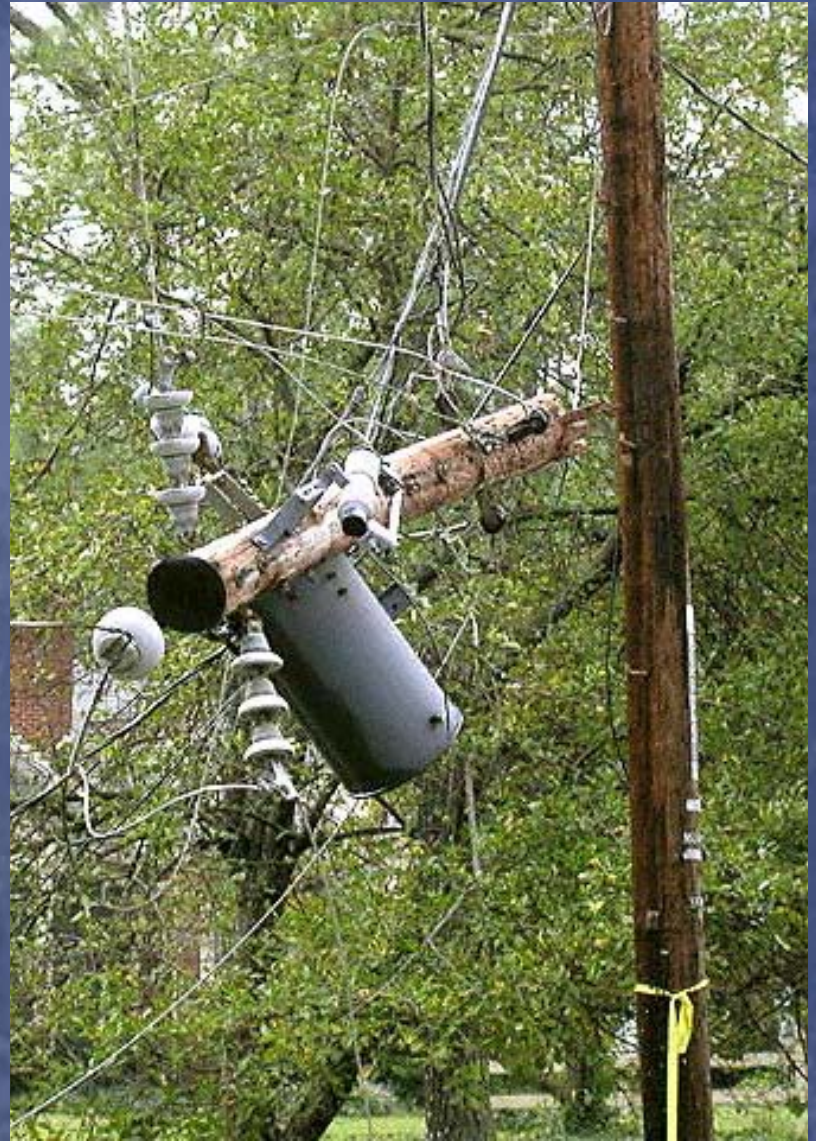


Storm Restoration Complicating Factors

The job in the previous example was relatively uncomplicated.

The time required would increase if any of the following conditions exist:

- A transformer or switch on the pole
- More than one circuit on the pole
- A service to a home from the pole





Dominion[®]